

WUHAN MARINE MACHINERY PLANT CO.,LTD.

成套设备经营部：027-68867018  
船舶产品经营部：027-68867127  
海洋工程装备经营部：027-68867416/7417  
国际经营部：027-68867086/7087

地址：中国湖北省武汉市青山区武东街九号  
邮编：430084  
传真：027-68867461/7462  
邮箱：whcj@wmmp.com.cn  
网址：http://www.wmmp.com.cn

主要子公司：  
青岛海西重机有限责任公司  
地址：山东省青岛市黄岛区九龙山路1597号  
电话：0532-55711312  
邮箱：bgs@qdhhmc.com  
网址：http://www.qdhhmc.com

武汉铁锚焊接材料股份有限公司  
地址：湖北省武汉市青山区武东路15号  
电话：027-68867079  
传真：027-68867069/7078  
邮箱：whtm@whtm.com.cn  
网址：http://www.whtm.com.cn

V: ZHYB2406-10



**CSSC**

**武汉船用机械有限责任公司**

**WMMP**





WUHAN MARINE MACHINERY PLANT CO.,LTD.

# 兴装强军 兴船报国 打造精品 做强主业

Devote to prosperity of China's shipbuilding industry  
Transcend in innovation  
Build high quality  
and strengthen core business

## 目录 Contents

02	董事长致辞	Address from the Chairman
04	企业简介	Introduction
06	企业愿景	Enterprise Vision
08	海军特种装备	Special Naval Equipment
10	船海工程装备	Marine Offshore Equipment
28	港口起重装备	Portal Crane
32	特种焊接材料	Welding Consumables
34	悬索桥索鞍索夹	Cable Saddle Clamp of Suspension Bridge
36	燃气轮机配套	Gas Turbine
38	成套设备	Complete Equipment
40	加工、检测技术	Process & Detect Capability
42	船海工程机电设备国家工程研究中心	National Engineering Research Center of Marine Machinery Equipment
44	售后服务	After-sales Service



# 董事长致辞 Address from the Chairman



# WMMP

**Devote to prosperity of China's shipbuilding industry  
Transcend in innovation  
Build high quality  
and strengthen core business**

自武汉船用机械有限责任公司创立以来，我们始终坚持以服务国防、引领行业、奉献社会为使命，牢固树立国际化、集团化、现代化的发展理念，努力建设成为行业领先、国际一流的现代化企业集团，历经60多年的开拓创新和拼搏进取，获得了企业今天的长足发展，创造了良好的企业和社会效益，实现了企业与合作伙伴的合作双赢。借此机会，谨向长期以来关心关注武汉船机公司发展的国内外客户和合作伙伴致以诚挚的感谢！

时代在阔步前进，武汉船机在竞争中壮大，创新中超越。回首过去，勇于开拓进取的船机人用勤劳和智慧谱写了改革发展的辉煌篇章；面向未来，充满自信自强的船机人必将以更加稳健的步伐、优良的业绩、高效的发展，回馈广大客户信赖与支持，共同创造更加美好的明天。

Since the foundation of Wuhan Marine Machinery Plant Co., Ltd.(WMMP), we always adhere to the mission of "Serve the Defense, Lead the Industry, Contribute to the Society" , firmly establishing the development philosophy of internationalization, collectivization and modernization. Strive for keeping ahead in the industry and being world-class modern enterprise group. After 60 years of innovation and endeavor, some substantial progress has been achieved currently. At the same time, remarkable enterprise and social benefits have been received, and win-win cooperation between the company and customers has been built as well. I would like to take this opportunity to extend my sincere thanks to domestic and foreign customers and partners who have long been showing great concern for the development of WMMP.

With the advances of times, WMMP grows up in the competition and transcend in innovation. Looking back , people from WMMP who were courageous to forge ahead, composed a glorious chapter in the reform and development with their diligence and wisdom. In the oriented future, self-confident people from WMMP will do our best to repay the trust and support from customers with more and more steady pace, excellent performance and efficient development. Let us work together to make a better prospect.



# 企业简介 Introduction



## 企业简介 Introduction

武汉船用机械有限责任公司（WMMP）是世界500强企业中国船舶集团有限公司的重要成员单位。公司占地面积107.73万平方米(其中武汉本部占地面积58.16万平方米)，现有员工3400余人，注册资本299242万元，公司集大型、成套装备研制、生产、销售和服务于一体，产品涉及海军特种装备、船海工程装备、港口起重装备、特种焊接材料、悬索桥索鞍索夹、燃气轮机配套等多个产业。公司为国家高新技术企业，建有国家级企业技术中心和船海工程机电设备国家工程研究中心，拥有一流的技术创新团队，具备先进的装备制造能力，主要产品研制始终保持与国际先进技术发展同步。公司旗下拥有青岛海西重机有限责任公司、武汉铁锚焊接材料股份有限公司等控股子公司，并与多家国内外著名企业建有合资公司，形成了国际化、集团化经营格局经营规模和发展水平国内行业领先。

Wuhan Marine Machinery Plant Co., Ltd.(WMMP) is one of important member of CHINA STATE SHIPBUILDING CORPORATION LIMITED which is one of Fortune 500 Enterprises in the world. WMMP covers an area of 1,070,730 square meters (its headquarter in Wuhan covers 58,1600 square meters) with 3400 staffs and RMB2,992,420,000 of the registered capital currently. By incorporating the research, manufacture, sale and service for the large, complete-set, custom-tailored equipment, its products go to the industries for the naval equipment, marine offshore equipment, portal crane, welding consumables, suspension bridge cable saddle clamp, parts for gas-turbine engine and so on. WMMP is a new high-tech enterprise with national technical center and national engineering research center of marine machinery equipment. WMMP has a First-class technical innovation team where there is advanced equipment-manufacturing capacity. The research and manufacture of main products keep synchronized with development of the international advanced technology. WMMP has holding subsidiaries such as Qingdao Haixi Heavy-duty Machinery Co., Ltd., Wuhan Temo Welding Consumables Co., Ltd and so on. WMMP has also established several joint ventures with some domestic and world-famous companies. Those come to the internationalized and collectivized management structure which ranks ahead of the domestic industries on the business size and development extent.





海军特种装备 Special Naval Equipment



船海工程装备 Marine Offshore Equipment



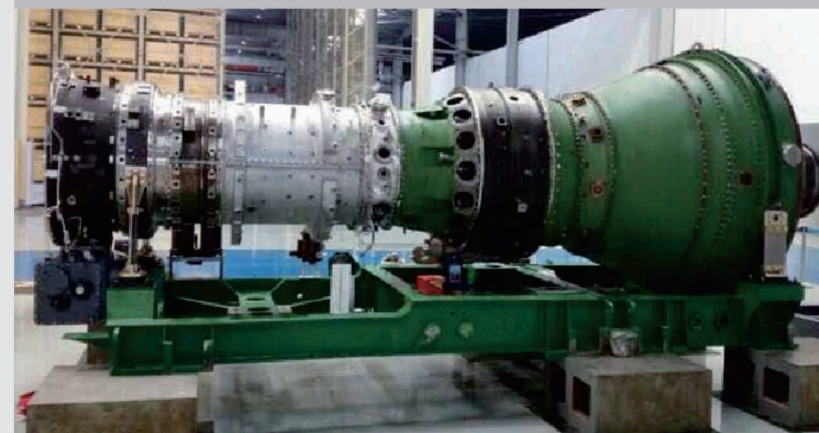
特种焊接材料 Welding Consumables



港口起重装备 Portal Crane



悬索桥索鞍索夹 Cable Saddle Clamp of Suspension Bridge



燃气轮机配套 Gas Turbine

## 企业愿景 ▶ Enterprise Vision

行业领先 国际一流

In an effort to build itself to be a modern enterprise group that is leading in the industry and first class in the world.

## 总体思路 GENERAL TRAIN OF THOUGHT

坚持创新驱动，聚焦提质增效，着力推进智能制造和智能装备、国际化经营、品牌建设、提高企业全要素生产率，做优做强海军特种装备、船海工程装备、港口起重装备、特种焊接材料、悬索桥索鞍索夹和燃气轮机配套六大产业板块，打造高端、智能、绿色研发型制造企业，实现由生产型制造向服务型制造企业转变。

Adhere to innovation driven, focus on improving quality and efficiency, strive to promote intelligent manufacturing and intelligent equipment, international operation, brand building, improve enterprise Total factor productivity, optimize and strengthen six major industrial sectors, including navy special equipment, marine offshore equipment, port lifting equipment, special welding consumables, Suspension bridge cable saddle clamp and gas turbine supporting, and build high-end, intelligent and green research oriented manufacturing enterprises, Realize the transformation from production-oriented manufacturing to service-oriented manufacturing enterprises.



Always be the most powerful and largest  
manufacturing center for navy special equipment in China

## 海军特种装备 SPECIAL NAVAL EQUIPMENT

WUHAN MARINE  
MACHINERY PLANT CO.,LTD.



始终做中国最强最大海军特种装备武器装备研制保障中心

Always be the most powerful and largest naval special equipment research and development support center in China.

武汉船机是我国海军特种装备重点骨干配套企业。作为国家“一五”期间重点建设项目之一，武汉船机60多年来为海军建设提供了大量优质装备，产品范围涉及海军水面、水下所有装备和专项工程，为国防建设作出了突出贡献。

WMMP is a mainstay supporting enterprinse for navy special equipment in China . As one of the key construction projects during the period of "First Five-Year Plan", WMMP has provided a large number of high-quality equipment for navy for over 60 years. The range of products covers all equipment and special projects for naval ship on the surface and under water. The company has made outstanding contributions to national defense construction.

## SPECIAL NAVAL EQUIPMENT SPECIAL NAVAL EQUIPMENT

DEVOTE TO PROSPERITY OF CHINA'S SHIPBUILDING INDUSTRY  
EXCEED BY INNOVATIONBUILD QUALITY, AND STRENGTHEN CORE BUSINESS



# 船海工程装备

## Marine Offshore Equipment

作为我国最专业的船海工程装备供应商，公司发挥船舶配套龙头企业的技术和资源优势，统筹武汉、青岛两大基地资源，面向海洋资源开发和海洋经济发展的生产、施工、服务、保障装备需求，以“甲板及拖带系统、海事起重机、推进及动力定位系统、液货装卸系统、升降系统”五大系统产品为核心，提供种类最齐全、规格最完整的产品、系统装备和整体解决方案。

As a prominent professional supplier for Marine Offshore Equipment in China,at an advantage of the marine auxiliary technology and resource in this industry,WMMP is coordinating two-base resources between Wuhan-base and Qingdao-base and orienting toward demand of production,construction,service and assurance for ocean resource/economy development. By taking the five systematic products, such as "Deck Traction System,Marine Cranes, Propulsion and Dynamic-positioning System,Liquid-cargo-handling System and Jacking System" as the core,WMMP Provides products in a way of diversity with optimal integrality in size and systematic equipment and the integral solution.

始终做中国船海工程装备配套企业旗舰和系统集成（EPCI）的先锋

Firmly be the flagship of China's marine offshore equipment suppliers and the pioneer of systematic intergration (EPCI)

WMMP  
WUHAN MARINE  
MACHINERY PLANT CO.,LTD.



平台集成化配套  
Platform Integration Equipment

### 典型代表产品 Typical Products

#### 多功能自升式辅助平台系统集成 Multifunctional self elevating auxiliary platform system integration

公司可提供包括多种功能自升式辅助平台、风电安装平台、自升式勘探平台、移动式油气处理平台等多种平台类型，涵盖水深可达350英尺以上。

The company can provide various platform types, including multifunctional self elevating auxiliary platforms, wind power installation platforms, self elevating exploration platforms, mobile oil and gas processing platforms, and so on. Covering water depths of up to 350 feet or more.

公司可为平台提供以下系统：  
Our company can provide the system below:

- 升降系统 | Jacking System
- 起重系统 | Crane System
- 主推进系统 | Main Thruster System
- 锚泊系统 | Mooring System

### 典型代表产品 Typical Products

#### 78米支持船甲板系统集成配套 Integrated-assembly is provided for 78m AHTS Vessel

- 350T双滚筒低压拖缆机  
350T Double-drum Towing Winch
- 15T-20T液压绞车：4套  
15T-20T Hydraulic Winch: 4 sets
- K52AM2锚机：1套  
K52AM2 Windlass: 1 set

- 500T鲨鱼钳和挡销：2套  
500T Shark Jaw and Stopper Pin: 2 sets
- 主机：2套  
Main engine: 2 sets
- 主发电机组：2套  
Main generator: 2 sets
- 应急发电机组：1套  
Emergency generator: 1 set

- 主推调距桨及轴系：2套  
Main controllable pitch propellers and shafts: 2 sets
- 艏侧向推进器：1套  
Bow tunnel thruster: 1 set
- 艉侧向推进器：1套  
Stern tunnel thruster: 1 set
- DP2控制系统：1套  
DP2 control system: 1 set



远洋运输船甲板机械配套  
Ocean Shipping Ship Deck Machinery



多用途工作船模块化配套  
Ancillary Modulization for Multi-purpose Operation Vessel

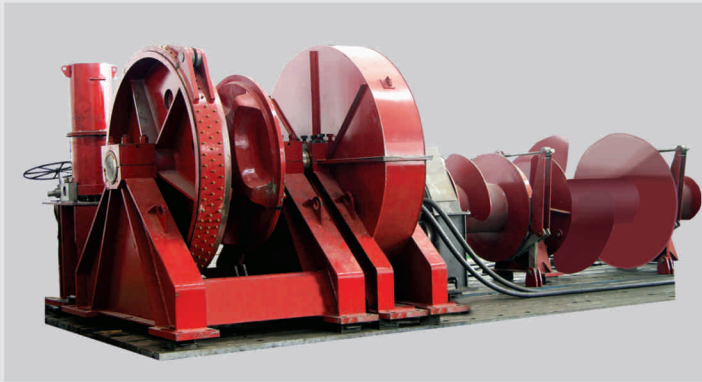


# 船海工程装备

Marine Offshore  
Equipment

WMMP  
WUHAN MARINE  
MACHINERY PLANT CO., LTD.

## 甲板拖带系统 Deck Traction System



30万吨VLCC船用锚绞机  
Windlass and winch for 300,000DWT VLCC

### 锚绞机 Windlass and Mooring Winch

起锚机、系泊绞车产品主要由动力单元、执行机构及控制系统三部分组成。按照驱动形式主要分为电动型和电液型两大类，是船舶航行的重要安全设备之一。

产品适用范围：散货船、集装箱船、油船、LNG船、化学品液货船、滚装船、渔船等。

特点：公司可根据用户需求设计制造各种大、中、小型电动或液压驱动的起锚机、系泊绞车，具有拉力大、容绳量多、制动安全可靠等特点，能满足国内外所有大中型船舶的起抛锚作业、系统绞绳要求。

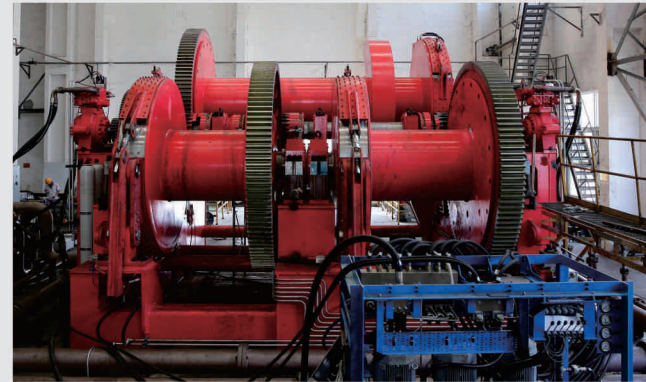
技术参数：锚链直径：44-147mm 起锚速度≥9m/min  
系统额定拉力：75-315KN 系统速度≥15m/min

Windlass and mooring winch products consist of power unit, implementation mechanism and control system. Classified by the drive type, there are two major types: electric type and electro-hydraulic type. It is one of the important safety equipment of ship navigation.

Applicable scope: bulk carriers, container vessels, oil tankers, LNG ships, chemical tankers, Ro/Ro vessels, fishing boats, etc.

Features: the company can design and manufacture all kinds of large, medium and small electric or hydraulic driven windlass and mooring winches to meet different client needs, which have features like heavy pull power, large rope capacity and reliable braking. Requirements on anchoring operation and mooring rope of large and medium-sized vessels can be met as well for all major domestic and foreign clients.

Technial Parameters: Diameter of Anchor Chain 44-147mm;  
Anchoring Speed≥9m/min;Rated Tension of Hawser orum 75-315KN;  
Speed of Mooring Wire≥15m/min



350T拖绞机  
350T Towing Winch

### 拖绞机 Towing Winch

拖绞机是海洋三用工作船上最重要的设备之一，其用途是为没有自航能力的海洋平台提供拖曳、起抛锚作用以及捞取油管作业等。

产品适用范围：适用于多用途工作船（AHTS）、救助拖船（salvagetug）、远洋拖轮、油田守护船、多用途支持船等各类海洋工程船及平台的配套。

特点：具有工作安全可靠、维修保养简单的优点。集成有应急释放系统、张力选择、恒张力控制和动态制动等功能。驾驶室遥控、机旁操作和手动应急三种操作方式。

技术参数：额定负载：600-5000KN 额定转速：5-20m/min  
绳索容量：Φ50mm×1000m-Φ90mm×3800m  
刹车力：1800-5500KN

Towing winch is one of the most important equipment for AHTS. Its application is to offer dragging, anchor handling operation and pipeline dredging for offshore platform without self-navigation ability.

Applicable Scope: Suitable for AHTS, salvage tug, ocean-going tug, oil field guard vessel, multi-purpose support vessel, various offshore ship and platform.

Features: low operating pressure (low pressure type), safety & reliability and easy maintenance; integration of emergency release system, optional tension, constant tension control and dynamic braking; three operating modes (remote control in bridge, local operation and manual emergency).

Technial Parameters: Rated Load: 600-5000KN Rated Speed:5-20m/min  
Rope Capacity: Φ50mm×1000m-Φ90mm×3800m  
Braking Force: 1800-5500KN



多点锚泊和作业绞车  
Multi-point Mooring and Operating Winch



鲨鱼钳  
Shark Jaw

### 多点锚泊和作业绞车 Multi-point Mooring and Operating Winch

公司可设计制造液压驱动和电机驱动两种形式的多点锚泊和作业绞车，适用于海洋平台、起重船、风电安装船、打捞船、打桩船、挖泥船、铺管船的配套，生产的系泊绞车、定位绞车、移船绞车、起重绞车、打桩绞车、横移绞车、桥架绞车、A/R绞车等分别获得了ABS、DNV、CCS等船级社的认可。

产品特点：可实现多机联动控制、自适应控制、应急释放、紧急停机、恒张力控制、动态制动等功能，还具有高效自动排缆、可视化监控等特点。

The company can design and manufacture multi-point mooring and operating winch by means of hydraulic driven and electric motor driven. It is suitable for offshore platform, floating crane, wind mill installation vessel, salvage vessel, pile driving boat, dredger and pipe-laying ship. Mooring winch, positioning winch, pontoon maneuvering winch, loading winch, piling winch, side winch, rocker winch and A/R winch have been approved by ABS, DNV, CCS and other classification societies.

Features: Available with functions such as multi-machine coordinated control, self-adaptive control, emergency release, emergency stop, constant tension control, dynamic braking and other functions such as efficient self stowing & mooring and visualized monitoring.

### 鲨鱼钳 Shark Jaw

鲨鱼钳是WMMP自主研发甲板拖带系统辅助产品。其安装在船艉，多是鲨鱼钳和拖销的组合设备，其中鲨鱼钳可用于夹持锚链或钢丝绳，起临时固定的作用，拖销可用于限制锚链或钢丝绳的摆动，起安全防护的作用。它可以适用于三用工作船、平台供应船等工程船的需求，配合拖绞机实现多种海上工程作业。该产品基于标准化、模块化、系列化理念设计，可以满足不同用户的不同需求而量身定制。

Shark jaw, which usually means the combined device of shark jaw & towing pins and to be installed in aft-deck, it is the assessorial product of deck towing system independent-developed by WMMP. The shark jaw can be used for clamping anchors or wire rope, performing the function of holding wire line temporarily. The towing pins can be used for confining the swing of anchors or wire rope, taking safety-protecting function. Concerting with towing winch, shark jaw & towing pins can implementing a variety of marine engineering work and suit the needs of AHTS, platform supply ship and other working ships.

Based on the design concept of standardization, modularization and serialization, the product can be customized to suit the various needs of different consumers.



# 船海工程装备

Marine Offshore  
Equipment

WMMP  
WUHAN MARINE  
MACHINERY PLANT CO.,LTD.



特种作业船艏门架系统  
Stem Frame System for Special Operation Vessel



特种平台水下定位和牵引系统  
Underwater Positioning and Traction System for the Special Platform



海上综合补给系统  
UNREP System

## 甲板水下作业系统 Underwater Deck Working System

艏部门吊甲板系统，实现海上拖曳和水下吊放等作业需求，具有恒张力控制、主动补偿等深水作业需要的功能，设备满足船级社起重机和拖曳绞车的规范要求。

吊放负载：15~50t

With constant tension system and AHC function, the stern deck crane system works for towing or underwater lifting. The equipment complys with the rules and standards of class societies for offshore crane and towing winch.  
Safe working load: 15t~50t.



甲板水下作业系统  
Underwater Deck Working System

## 海上综合补给系统 UNREP System

模块化设计、恒张力控制功能、主动补偿功能，安装简单，复装快便，能实现高海况船-船、船-岛的干货、液货传输以及人员吊运，实现快速应急保障。

Modularization design, constant control and active heave compensation, the installation is simple with easy re-installation, also can realize the handling for dry cargo and liquid cargo personnel transport between vessel-vessel and vessel-island under the high-condition at sea for quick emergency assurance.



海上综合补给系统  
UNREP System

## 海事起重机 Marine Crane



双臂甲板起重机 Double jib Deck Crane



单臂甲板起重机 Single jib Deck Crane

## 甲板起重机 Deck Crane

甲板起重机是船舶上的货物装卸设备，是主要的甲板机械，公司主要制造钢丝绳变幅起重机（分单臂甲板起重机、双臂甲板起重机）、油缸变幅甲板起重机等。

Deck crane is the handling equipment for the cargos on the ship deck, and it is the main deck machinery. The company is mainly specialized in manufacturing wire rope luffing crane(including single-jib deck crane and double-jib deck crane) and cylinder luffing cranes.

## 单、双臂甲板起重机 Single and Double jib Deck Crane

产品适用范围：适用于散货船、集装箱船和其它运输船进行装卸货物。

特点：能防风、防雨、防浪，可同时进行升降、俯仰、回转操作。

技术参数：额定负载 30-200t 最大回转半径 15-40m 最小回转半径 3.5m

Applicable Scope: Suitable for bulk carriers, container vessels and other transportation vessels for the purpose of loading and unloading cargos.

Features: Wind-proof, rain-proof, wave-proof, availability of hoisting, luffing and slewing operation.

Technical parameters: Rated Load: 30-200t Maximum Slewing Radius: 15-40m Minimum Slewing Radius: 3.5m



# 船海工程装备

## Marine Offshore Equipment

WMMP  
WUHAN MARINE  
MACHINERY PLANT CO.,LTD.



COC型海事起重机  
COC type Offshore Crane



CCOC型海事起重机  
CCOC type Offshore Crane



EOC型海事起重机  
EOC type Offshore Crane

### COC型海事起重机 COC type Offshore Crane

钢丝绳变幅，A-FRAME结构，起重能力10-400t, 工作半径25-80m。

主要应用范围：各种平台装备，如采油平台、钻井平台/船，FPSO、半潜平台等。

Luffing rope, A-FRAME structure, 10-400 tons lifting capacity, working radius of 25-80 meters.

Main applications: A variety of platforms and equipment, such as oil platforms, drilling rigs / vessels, FPSO, semi-submersible platform.

### CCOC型海事起重机 CCOC type Offshore Crane

钢丝绳变幅、A字架结构，回转支承安装，起重能力70-2000t，采用柴油机-液压或电动-液压驱动，大量采用高强度钢材，自重较轻，整体式机器房，维修方便，可旋转绕桩，人员起吊等功能。

Luffing rope, A-FRAME structure. 70-2000 tons lifting capacity, slewing endless (360° ) through the cylindrical leg,drived by diesel engine or electromotor through hydraulic system , made up of high strength steel,unitary machiel room,personal lift.

### EOC型海事起重机 EOC type Offshore Crane

钢丝绳变幅，将军柱结构，起重能力40-400吨，工作半径30-100米。

主要应用范围：300ft以上自升式钻井平台、深海半潜式平台等深海作业海工装备。

The EOC offshore crane is type of rope luffing crane with King-Post structure. 40-400 tons lifting capacity,the work radius ranges from 30m to 100m.

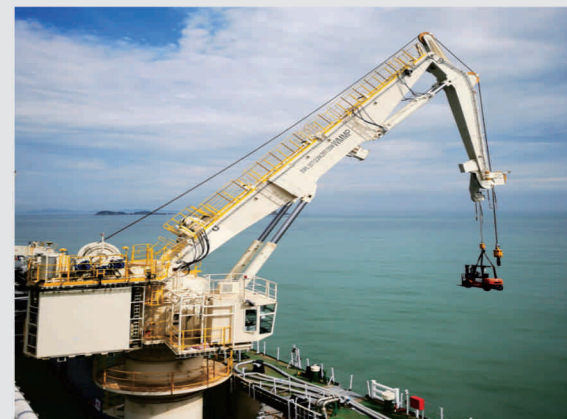
Main application: 300ft or more Jack-Up Rig/ Semi-submersible platform or other deep sea marine equipment.



3600T浮吊 3600T Floating Crane



AOC型海事起重机 AOC type Offshore Crane



深海补偿技术 Deep-sea Initiative Compensation Technology

### SOC型海事起重机 SOC type Offshore Crane

公司制造的各类浮式起重机已广泛应用于海上工程作业。

典型代表产品：公司专为烟台打捞局工程船精心设计制造的3690T双臂架变幅浮式起重机，为上海打捞局工程船设计制造的700T全回转浮式起重机。

技术参数：3690T起重机单臂架额定起重量1845t，双臂架额定起重量2×1845t；每座臂架配置922.5t主钩两只，二个主钩和一个副钩呈纵向直线布置；主钩最大起升高度108m。

Various kinds of floating cranes manufactured by the company have been widely used in ocean engineering operation.

Typical Products: The Company provide well-designed double-boom luffing floating crane for 3690t salvage engineering vessel for Yantai Salvage Bureau and designed 700t fully revolving floating crane for salvage engineering vessel for shanghai Salvage Bureau.

Technical Parameters: For 3690t Crane , the rated lifting capacity at single-boom:1845t. The rate lifting capacity at Dual-boom: 2×1845t; Each boom is equipped with 2 sets of 922.5t main hooks.

Two main hooks and a secondary hook show vertical linear layout ; Maximum Lifting Height for Main Hook: 108m.

### AOC型海事起重机 AOC type Offshore Crane

油缸变幅，具有折臂、伸缩臂等多种选型，起重能力15-100吨，工作半径20-35米。

主要应用范围：FPSO/作业平台/各种工作船的辅助吊机。

The AOC offshore crane is type of cylinder luffing crane which has various alternative options such as folding boom or telescopic boom. With the load capacity ranging from 15t to 100t, the work radius ranges from 20m to 35m.

Main application: FPSO / Offshore Platform / Assistant crane on working vessel.

### 深海补偿技术 Deep-sea Initiative Compensation Technology

公司研发深海主动补偿技术，应用于深水作业起重机、艉部门吊、特种作业绞车等，适用于多功能水下作业支持船、物探船、铺缆船等高端海工装备。

The company develops the deep-sea initiative compensation technology, used for deep water operation lifting cranes, tail crane, and special operation winches, etc. It is suitable for multi-purpose underwater operation vessels, exploration ships, cable-laying ships and other sophisticated offshore equipments.



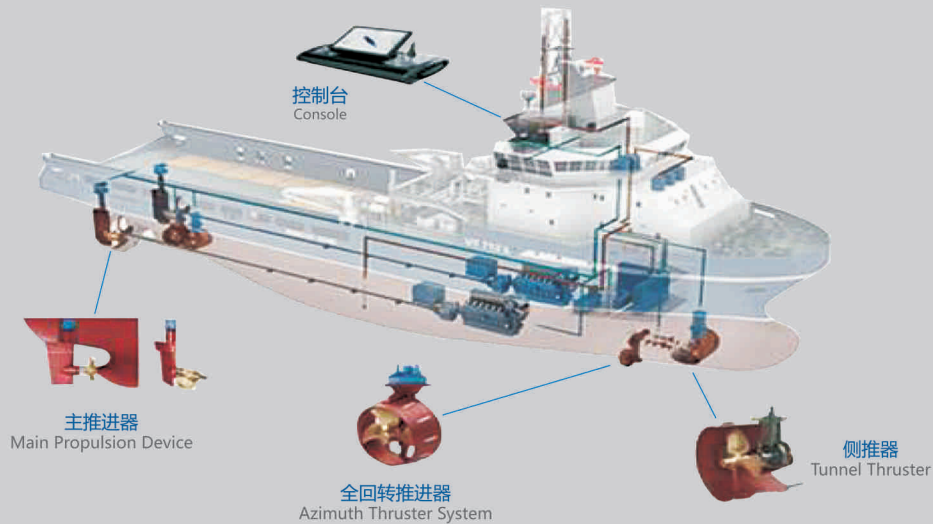
# 船海工程装备

Marine Offshore  
Equipment

WMMP  
WUHAN MARINE  
MACHINERY PLANT CO.,LTD.

## 推进系统 Propulsion System

推进系统集成  
Promoting systems integration



## 全回转推进系统 Azimuth Thruster Propulsion System

公司全回转产品包括定螺距全回转舵桨装置和可调螺距全回转舵桨装置两种型式，形成了全回转动力推进系统集成配套的能力。

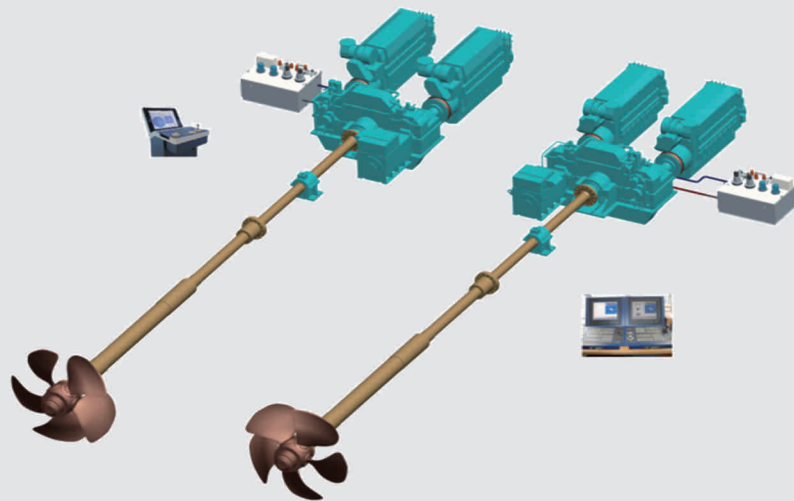
There are two forms of azimuth products in WMMP, the ancillary integration for the azimuth propulsion system has been formed.



吊舱推进装置 Podded thruster



全回转舵桨 Azimuth thruster



## 可调距螺旋桨推进装置及系统

## Controllable pitch propeller And Propulsion Systems

产品适用于各种舰船、海洋工程船、多用途船、挖泥船、海监渔政执法船及消防船等多种船舶，产品已形成模块化、系列化和集成化。

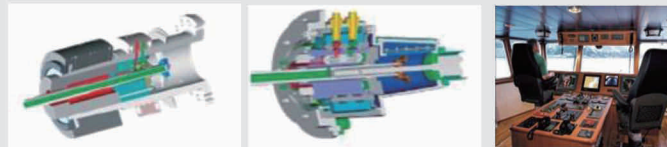
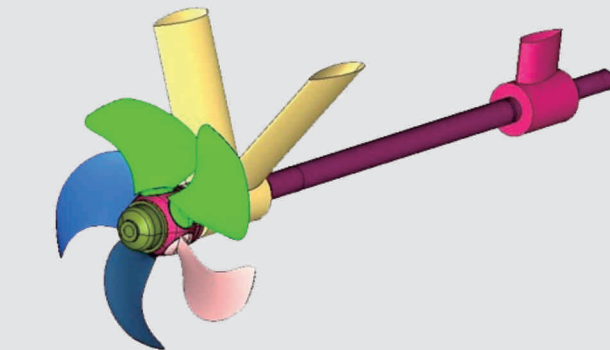
特点：公司拥有主推进系统集成设计开发平台，具备从主机、高弹、齿轮箱、调距桨和轴系装置、遥控监测系统集成设计与配套的能力。

技术参数：最大桨毂直径：~2500mm

桨叶数：3、4、5

单桨最大功率：~60MW

液压系统最大工作压力：4-10MPa



Applicable Scope: suitable for various kinds ships, offshore engineering ships, multi-purpose vessels, dredgers, ocean surveillance and fishing guard ships, firefighting boats and other vessels. The product has been formed with modularization, serialization and integration.

Features: the Company owns design and development platform for main propulsion system, which is capable of integrated design and support for the main engine, high flexible coupling, gear box, controllable pitch propeller, shafting device as well as remote control and monitoring system. Technical Parameters: Max. propeller hub diameter : ~2500mm;

Number of blades: 3、4、5;

Max. power of Single propeller : ~60MW;

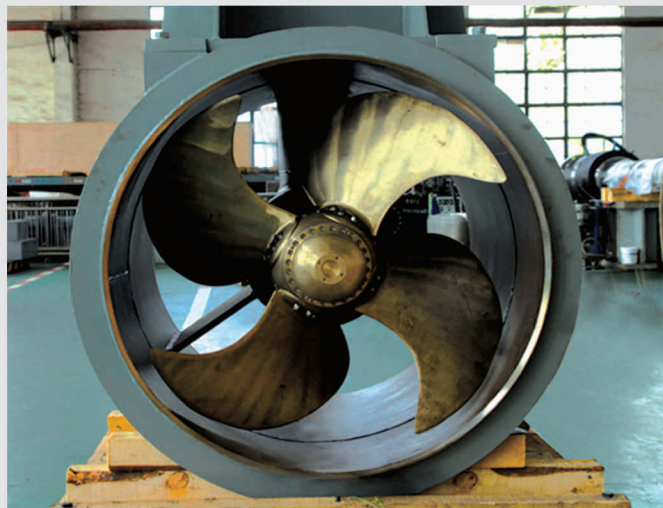
Maximum Working Pressure of Hydraulic System : 4-10MPa.



# 船海工程装备

## Marine Offshore Equipment

**WMMP**  
WUHAN MARINE  
MACHINERY PLANT CO.,LTD.



侧向推进器  
Tunnel Thruster

### 侧向推进器 Tunnel Thruster

产品适用于各种舰船、大型远洋运输船舶以及具有动力定位功能的海洋工程船舶，为船舶提供左舷或右舷横向推力的管道式推进装置，可有效提高船舶的机动性和可操作性。

特点：可调螺距侧向推进装置采用大侧斜桨叶，减小振动和噪声，定螺距侧向推进装置螺旋桨采用Caplan叶型；可以在不移动驱动电机的情况下更换驱动轴密封。

Application Scope: Suitable for various kinds ships, large ocean transportation ships, and offshore engineering ships with dynamic positioning function. It provides tunnel propulsion devices with lateral thrust on the port or starboard side, which can effectively improve the maneuverability and operability of ships. Features: The adjustable pitch tunnel propulsion device adopts large skewed blades to reduce vibration and noise, while the fixed pitch tunnel propulsion device adopts Caplan blade type propellers; The drive shaft seal can be replaced without moving the drive motor.



喷水推进装置  
Water Jet Equipment and Propulsion System

### 喷水推进系统 Waterjets System

生产100系列和200系列喷水推进装置及其动力系统集成配套，配套功率从100kW到10000kW，可应用于游艇、高速渡轮、公务船、救援船等高速船舶。

WMMP is capable of producing and selling Waterjets not only for 100-serie but also for 200-Serie with integration of power system with power ranging from 100kW to 10000kW. This can be suitable for driving vessels such as yacht, high-speed Ferry, crew boat and rescue boat in China market.

### 柱塞式舵机 Ram-type Steering Gear

产品适用范围：引进日本川崎重工技术，生产FM/FE/RV等系列舵机，可为3000吨~50万吨的各类船舶配套。

特点：结构简单，安装方便，低噪音，安全可靠，经久耐用。

技术参数：额定工作扭矩：32t.m-1150t.m

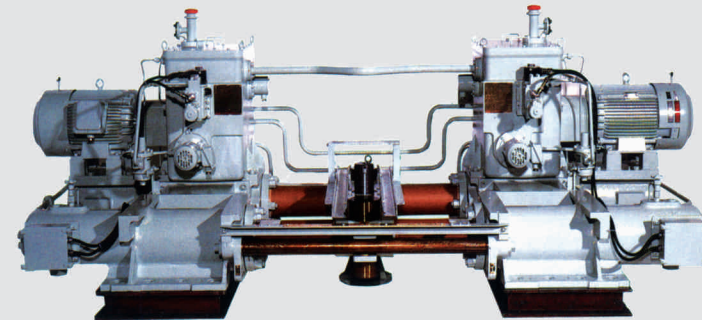
转舵角度：±35°、±45° 转舵速度：65°/28s

Applicable Scope: Technology from Kawasaki Heavy Industry in Japan has been introduced to produce FM/FE/RV series of steering gears. It can be equipped for various types of ships ranging from 3,000 tons to 500,000 tons.

Features: Simple structure, easy to install, low noise, safe, reliable and durable in use.

Technical Parameters: Rated Operating Torque: 32t.m-1150t.m

Steering Angle: ±35°, ±45° Steering Speed: 65°/28s



### 转叶式舵机 Rotary Vane Steering Gear

产品适用范围：主要适用于11万吨以下、机舱小、货舱大的各类运输船，特别适合海洋平台、拖轮等海洋工程船，同时也可应用于各类军辅船。

特点：获得国家专利，产品性能达到国际先进水平，具有体积小，便于安装，维修简洁，易于实现大舵角转舵等优点。

技术参数：额定工作扭矩：63kNm-2000kNm

转叶的叶片数：3叶或2叶

最大转舵角度：2×35°、2×45°或2×65° 转舵速度：≥65°/28秒（单机组工作） ≥65°/14秒（双机组工作）

Applicable Scope: Mainly used in all kinds of transportation ships under 110,000 tons with small cabin and large cargo hold. Particularly suitable for offshore platform, tugs and other offshore engineering ships. It also applies to various types of military auxiliary vessels.

Features: Awarded with national patent, the product performance reaches international advanced level, featured with small size, easy installation, simple maintenance and implementation simplicity of large rudder angle.

Technical Parameters: Rated Operating Torque: 63kNm-2000kNm

Number of Rotary Vane: 3 vanes or 2 vanes

Maximum Steering Angle: 2 × 35°, 2 × 45° or 2 × 65°

Steering Speed: ≥ 65° / 28S (Single Unit Operation) ≥ 65° / 14S (Double Unit Operation)





# 船海工程装备

## Marine Offshore Equipment

WMMP  
WUHAN MARINE  
MACHINERY PLANT CO., LTD.

### 液货装卸系统 Crude Oil Loading and Unloading System

产品可为30万吨级VLCC及以下规格原油轮、各种规格的成品油化学品船、FPSO提供系统集成配套。

The systematically-integrated assembly is provided to suit for 300,000T or below VLCC, crude oil tanker , product oil tankers, chemicals vessels and FPSO.

### 艏输系统 Stern Transmission System

包括软管绞车、大缆绞车、应急释放阀、ESD阀、液压系统及电控系统等

单泵排量：50m³/h-2000m³/h。

Including hose winches, large cable winches , emergency release valves, ESD valves, hydraulic systems and electronic control systems, etc.  
Single Pump Capacity : 50m³/h-2000m³/h.

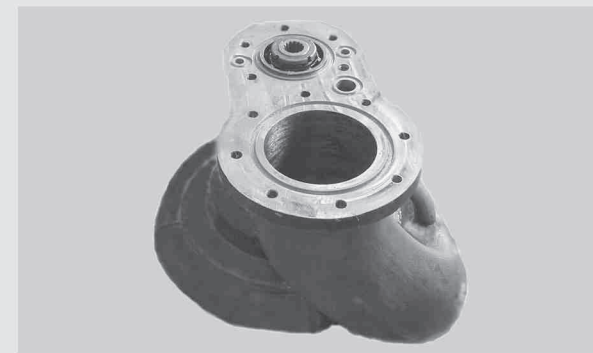
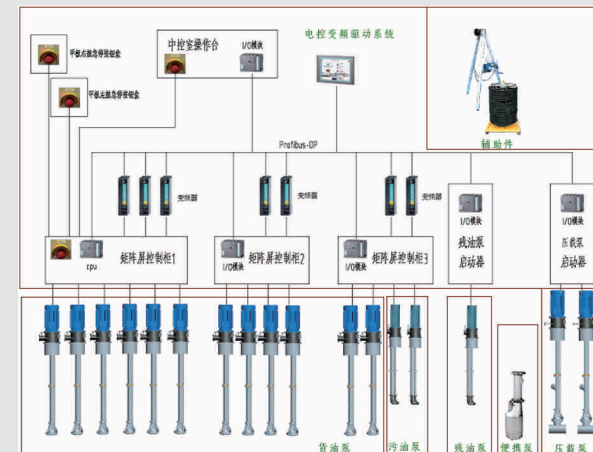


艏输绞车 Hose Reel

### 电动深井泵系统 The Electric Deep Well Pump System

基于长轴传动和矩阵变频技术，控制系统硬件冗余备份，可靠性高。  
系统排量：50m³/h-1500m³/h。

Based on the long shaft driven and matrix inverter technology, to control the system redundancy hardware with a high reliability.  
System Capacity : 50m³/h-1500m³/h.

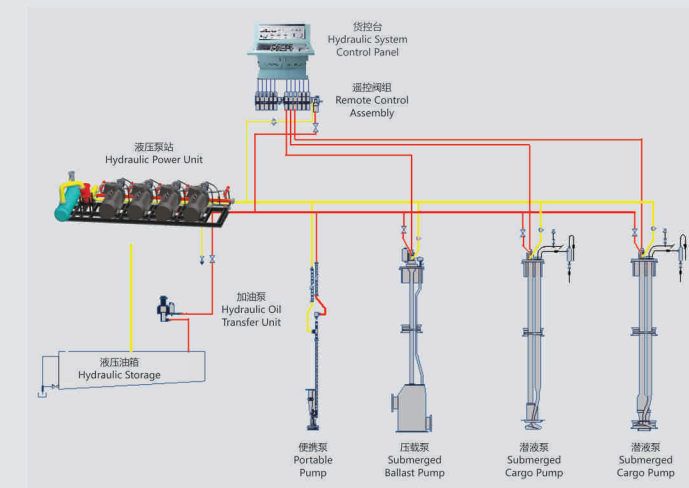
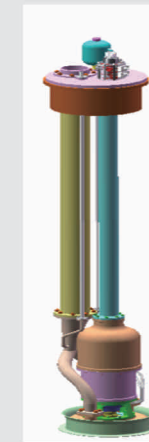


电动深井泵 Electrical Deepwell Pump

### 液压潜液泵系统 Hydraulic Submerged Cargo Pump

基于可靠性和本质安全设计，操作方便  
系统单泵排量：50m³/h-2000m³/h。

Easy to operate based on reliability and intrinsically safe design  
Single Pump Capacity: 50m³/h-2000m³/h.



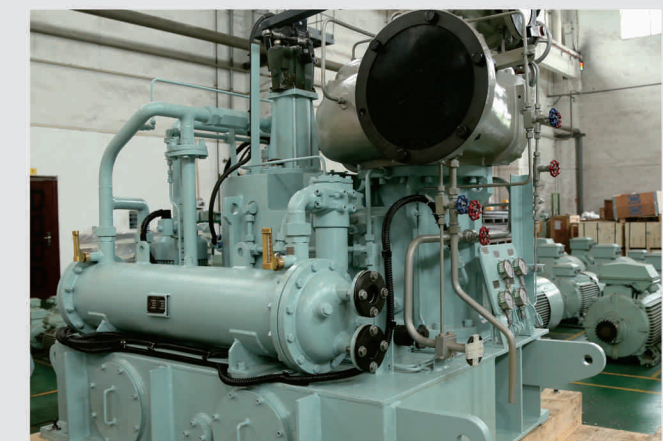
液压潜液泵  
Hydraulic Submerged Cargo Pump

### 透平货油泵系统 The Pump Room System

基于长寿命、无故障设计理念，运转平稳、噪音低，自动化控制系统，操作方便。

系统单泵排量：500m³/h-6000m³/h。

Based on long life and trouble free design concept, stable running, low noise, automatic control system and easy to operate.  
Single Pump Capacity : 500m³/h-6000m³/h.



透平驱动装置  
Steam Turbine



# 船海工程装备

## Marine Offshore Equipment

WMMP  
WUHAN MARINE  
MACHINERY PLANT CO.,LTD.

### 多功能自升式辅助平台 Multifunctional Self-elevating Support Platform

面向海洋资源开发和海洋经济发展的装备需求，采取“平台通用化、功能模块化、接口标准化”设计理念，针对近海施工、风电安装、油气生产开发以及岛礁建设、生活服务等不同工程和海洋环境需要，为工程提供经济、快速的整体解决方案。

To face the equipment requirements of ocean resource exploitation and economic development, our company chose the design concepts of "universal platform, modular function, interface standardization", according to different offshore engineering need,e.g. offshore construction, wind power installation, gas and oil development and production, reef island construction, life service and other projects or different ocean environment requires, our company can provide an economic, fast and complete solution for the project.

### 多功能自升式辅助平台 Multifunctional Self-elevating Support Platform

具备助航定位、快速提升、起重作业等多项功能，可为近海生产、施工、生活、支持等作业提供平台系统集成解决方案。

With functions of navaid positioning, rapid jacking-up, handling operation and so on, WMMP provides an integrated-solution for the platform system for offshore production, construction, life, support and so on.



SE350LB自升式海工辅助平台(110m桁架式桩腿、最大工作水深80m)  
SE350LB Self elevating Marine Auxiliary Platform(110m truss type pile legs, maximum working water depth 80m)



SE-300LB自升式海工平台（91m圆柱桩腿、最大工作水深60m）  
SE-300LB Self elevating Offshore Platform(91m cylindrical pile leg, maximum working water depth 60m)

### 核心功能模块 Core Functional Modules

升降系统及桩腿桩靴、助航定位系统、绕桩起重机、平台电站、船员生活等核心功能模块。

Jacking system with leg and spud can, navigation positioning system, LEC crane, platform power plant, crew accommodation unit.



华西海工1600T风电安装平台（4-8820T电动齿轮齿条升降系统、主吊机1600t）  
Huaxi Offshore 1600T Wind Power Installation Platform (4-8820T Electric Gear and Rack Lifting System, Main Crane 1600t)



天津港航1800T风电安装船（吊机1800t、380t；4-9000T电动齿轮齿条升降系统）  
Tianjin Port and Waterway Engineering Co.,Ltd 1800T wind power installation ship (crane 1800t, 380t; 4-9000T electric gear rack lifting system)



（华夏金租神大01/02）1200T风电安装平台(主吊机1200t;4-5000T液压插销升降系统)  
(Huaxia Financial Leasing Co., Ltd Shenda 01/02)1200T Wind Power Installation Platform (Main Crane 1200t; 4-5000T hydraulic pin lifting system)

### 平台服务作业功能模块 Function Service Modular

近海油田生活服务、供电供水、污水处理、起重安装、延长测试、钻采钻爆、栈桥通道以及货物人员输送等各种作业、服务功能模块。

The platform can support varieties of different working and service modular, Such as offshore oilfield service; Water and power supply; Sludge treatment; Lifting working; Prolong testing; Drill and blast; Cargo transport and so on.



马来西亚国家石油公司MOPU油气处理平台  
Petronas MOPU oil and gas processing platform



海洋石油163自安装井口平台  
Offshore Oil 163 Self installed Wellhead Platform



中国三峡101勘探平台  
China Three Gorges 101 Exploration Platform



# 船海工程装备

Marine Offshore  
Equipment

**WMMP**  
WUHAN MARINE  
MACHINERY PLANT CO.,LTD.

## 平台升降系统 Jacking System For Platform



## 液压齿轮齿条式升降装置 Hydraulic Rack and Pinion Jacking System

升降单元单齿额定举升力有100t、150t、200t、250t、350t五种规格，液压驱动，可集成提供齿条，最大升降速度72m/hr，广泛运用于自升式作业支持平台。

There are three kinds of the lifting capacity at single tooth, i.e. 100t,150t,200t,250t and 350t. With the rack after integrated-assembly, the maximum lifting speed by hydraulic drive is 72m/hr. It is widely used for the multifunction jack-up support platform.

## 液压插销式升降装置 Hydraulic Yoke and Pin Jacking System

单桩最大额定举升力8000t，最大升降速度60m/hr，可集成提供桩腿，具有可靠性高的特点，应用于风电安装船、自升式辅助平台等船型。

Rated lifting force at single leg:8,000t. Maximum lifting speed:60m/hr. It is provided with leg after integrated-assembly with the high reliability for the wind power installation vessel and the jack-up supporting platform.



## 电动齿轮齿条式升降装置

## Electrical Rack and Pinion Jacking System with Leg and Footing

升降单元单齿额定举升力330t，变频电机驱动，可实现扭矩动态分配，集成提供齿条，升降速度48m/hr，配备独立锁紧装置，适用于300ft-400ft自升式钻井平台。

The rated lifting force at single tooth:330t. Driven by the frequency-converting electric motor, the torque dispersal is doable dynamically with the rack after the integrated-assembly. With independent locking-up device, the lifting speed is 48m/hr. It is suitable for 300ft-400ft jack-up rig.

## 锁紧系统 Fixation System

锁紧系统主要用于平台站立作业时的状态锁紧，WMMP锁紧系统的单弦最大垂直锁紧力6800T，适用于300ft~350ft的自升式钻井平台。

Fixation System is used for holding the hull when the hull is standing on the sea. The Max. locking force of the single chord for WMMP Fixation System is 6800T. It is suitable for 300ft~400ft jack up rig.



# 港口起重装备

## Portal Crane

坚定做中国最具竞争力的港口装备制造企业

Firmly be the Most Competitive Manufacturer for Port Equipment

公司生产系列化、多样化的港口机械产品，广泛使用在国内外各大港口、船厂、钢厂及电厂自备码头上，在青岛海西湾建有港口机械生产基地，已成为港机行业最具竞争力的企业。

青岛海西重机有限责任公司是武汉船机的全资子公司，总占地面积51万平方米，建有1000米的开放码头和100米突堤码头，拥有120T、260T、300T、1600T等起重设备，装配场地面积21万平方米，主要以流水线作业、专业化配备的方式组织生产门座起重机、岸边集装箱起重机、龙门吊、浮式起重机和海洋平台等港口装卸机械和海工配套设备。

The company manufactures serial and diversified port machinery products being widely used in major ports, shipyards, steel mills and owned pier of power plants at home and abroad. The Company built a production base of port machinery in Haixi Bay in Qingdao, which has become an enterprise with the most competitive power in the port machinery industry.

Qingdao Haixi Heavy-Duty Machinery Co.,Ltd. is the wholly owned subsidiary of WMMP. Covering a total area of 510,000 square meters, and the stand line length of the exoteric quay and the jetty quay hits1000 meters and 100 meters respectively. The company owns 120T、260T、300T、1600T lifting equipment with total assembly area of 210,000 square meters . The company mainly produces portal crane, quayside container crane, gantry cranes and floating cranes, marine platform, port handling machinery and port navigation equipment by means of assembly line work and professional supporting means.



青岛海西重机有限责任公司  
QINGDAO HISEA HEAVY-DUTY MACHINERY CO., LTD.

## 自动化堆场 Automated Container Yard

典型代表产品: 国内首个规模化建成、平行岸线布置的双悬臂自动化堆场项目(日照港自动化堆场项目)、卡塔尔哈马德新港远控码头、天津港41T-34m自动化轨道吊、韩国鲜光40T自动化轨道吊

Typical Products: The first large-scale automated yard Project with Double-Cantilever Cranes arranged parallel to the coastline in China (Automated Container Yard Project at Rizhao Port), Qatar New Hamad Port Remote Control Terminal, 41T-34M Automated Rail Mounted Gantry Crane for Tianjin Port, China, 40T Automated Rail Mounted Gantry Crane for SNCT, South Korea.

你给我机会，我给你喜悦  
OFFER ME AN OPPORTUNITY! RETURN YOU GRATIFICATION! WMMP



自动化堆场  
Automated Container Yard

# PORT MACHINERY AND PORT NAVIGATION EQUIPMENT

## 集装箱岸桥 Ship-to-Shore Container Gantry Crane

典型代表产品: 上海港65T-38M岸边集装箱起重机、宁波舟山港50T-38M岸边集装箱起重机、意大利拉斯佩齐亚集装箱码头60T-62M岸边集装箱起重机、达飞的黎波里港65T-63M岸边集装箱起重机、韩国釜山新港65T-70M岸边集装箱起重机

Typical Products: 65T-38M STS for Shanghai Port, 50T-38M STS for Zhoushan Port, Ningbo, 60T-62M Ship to Shore Container Crane for LSCT, Italy, 65T-63M Ship to Shore Container Crane for Tripoli Port, France, 65T-70M Ship to Shore Container Crane for Pusan Newport Co., Ltd, South Korea.



65T-63M集装箱岸桥  
65T-63M Ship-to-Shore Container Gantry Crane



# 特种焊接材料

## Welding Consumables

公司拥有60多年的焊接材料生产历史，控股的武汉铁锚焊接材料股份有限公司是中国船舶集团旗下唯一的焊接材料生产企业，也是长江中下游地区颇具竞争实力的集产、学、研于一体的现代化焊材企业，具备18万吨/年的制造能力。

铁锚产品涵盖全品种舰船焊材、耐候钢焊材、超低氢及全系列药芯焊丝、高强及环保实芯焊丝、不锈钢及核电系列焊条、焊接集成配套服务等六大产业板块。

The company has over sixty years of welding material production history and is the controlling shareholder in Wuhan Temo Welding Consumables Co., LTD., belonging to the world top 500 enterprises in CSSC, which is the only welding consumables manufacturer and the strongest and largest modern enterprise in the middle and lower reaches of the Yangtze river on manufacture, science and research. the total manufacturing capacity is 180,000 tons annually. Temo's products are covered 6 industrial sectors, including all kinds of ship welding consumables, weathering steel welding consumables, ultra-low hydrogen and all series of flux-cored welding wires, high strength and environmental protection solid welding wires, stainless steel and nuclear power series welding electrodes, and welding integrated supporting services.

**WMMP**  
WUHAN MARINE  
MACHINERY PLANT CO.,LTD.

始终做中国特种焊材的先锋  
Always be the Pioneer of the Special Welding Consumables in China

**WMMP**  
WUHAN MARINE  
MACHINERY PLANT CO.,LTD.



## 特种焊材

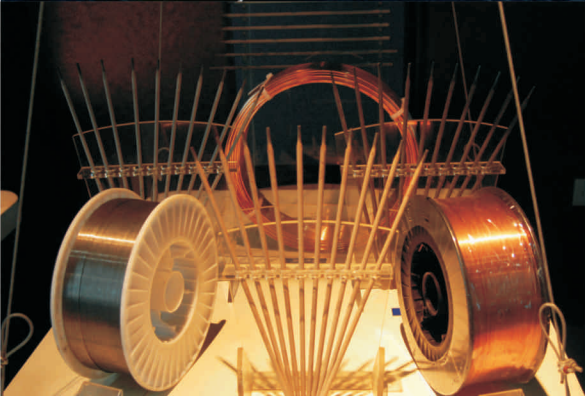
### Special Welding Consumables

产品名称 Product Name	代表产品 Typical Product	技术参数 Technical parameters
垂直气电焊药芯焊丝 Flux-cored Welding Wire For Vertical Gas Welding	YCJEG50	ReL: ≥375Mpa Rm: 490-660Mpa A: ≥22% Kv <sub>2</sub> : (-20℃) ≥34J
大合拢专用药芯焊丝 Flux-cored Welding Wire For Overall Joining	YCJ501 Ni-DHL	ReL: ≥375Mpa Rm: 490-660Mpa A: ≥22% Kv <sub>2</sub> : (-40℃) ≥47J
低合金药芯焊丝 Low Alloy Flux-cored Welding Wire	YCJ551K2	ReL: ≥460Mpa Rm: 550-690Mpa A: ≥22% Kv <sub>2</sub> : (-40℃) ≥47J

## 钢构焊材

### Welding Consumables for Steel Structure

产品名称 Product Name	代表产品 Typical Product	技术参数 Technical parameters
碳钢焊条 Carbon Steel Electrode	CJ507	ReL: ≥400Mpa Rm: ≥490Mpa A: ≥22% Kv <sub>2</sub> : (-30℃) ≥27J
碳钢药芯焊丝 Flux-cored Welding Wire For Carbon Steel	YCJ501-1	ReL: ≥375Mpa Rm: 490-660Mpa A: ≥22% Kv <sub>2</sub> : (-20℃) ≥47J
气保实芯焊丝 Gas-shield Solid Welding Wire	WH50-6	ReL: ≥420Mpa Rm: ≥500Mpa A: ≥22% Kv <sub>2</sub> : (-30℃) ≥27J
气埋弧实芯焊丝+焊剂 Solid Welding Wire for Submerged Arc Welding +Flux	MCJH10 Mn2+SJ101	ReL: ≥400Mpa Rm: 480-650Mpa A: ≥22% Kv <sub>2</sub> : (-20℃) ≥27J



特种焊接材料 Special Welding Consumables

你给我机会，我给你喜悦  
OFFER ME AN OPPORTUNITY! RETURN YOU GRATIFICATION! **WMMP**



碳钢焊接材料 Welding Consumables for Steel Structure



药芯焊丝 Flux-cored Welding Wire



# 悬索桥索鞍索夹

## Cable Saddle Clamp of Suspension Bridge

武汉船机自上世纪90年代初开始致力于桥梁市场的开发，累计为国内外数百座桥梁提供了桥梁功能部件，在悬索桥索鞍、索夹领域，是国内最大、最强的专业化制造企业之一。

公司充分发挥军工优势及技术优势，引领着我国大跨径悬索桥索鞍索夹行业的健康发展，公司主编了国家第一部悬索桥索鞍索夹行业标准，填补了国内空白，指导着行业发展。

WMMP has been committed to the development of the bridge market since the early 90s of last century, and has provided bridge functional components for hundreds of bridges at home and abroad, and is one of the largest and strongest professional manufacturing enterprises in China in the field of suspension bridge saddle and cable clamp. The company gives full play to the advantages of military industry and technology, leading the healthy development of China's large-span suspension bridge saddle clamp industry, the company edited the country's first suspension bridge saddle clamp industry standard to fill the domestic gap, guiding the development of the industry.

**WMMP**  
WUHAN MARINE  
MACHINERY PLANT CO.,LTD.

坚定做大跨度悬索桥索鞍索夹市场领域的先锋

Firmly be a pioneer in the market field of long-span suspension bridge cable saddle clamp

**WMMP**  
WUHAN MARINE  
MACHINERY PLANT CO.,LTD.

公司现具备同时承制5座主跨千米以上大桥索鞍索夹的制造能力，建有专业的索鞍生产线和索夹生产线，配有各类加工设备1800余台，用于索鞍索夹加工的主要关重设备达152台，独家拥有大型退火炉、索鞍焊接机器人、全封闭涂装厂房及AP激光跟踪仪等关键设备，加工制造能力居同行之首。

公司先后参与了厦门海沧大桥、武汉阳逻长江大桥、广州珠江黄埔大桥、南京长江第四大桥、湖南矮寨大桥、马鞍山长江大桥、南沙大桥（虎门二桥）、杨泗港长江大桥、五峰山长江大桥、深中通道伶仃洋大桥、南京仙新路过江通道、龙潭过江通道等一系列重大项目的建设，以精湛的工艺、优良的品质、良好的服务赢得了用户的一致好评！

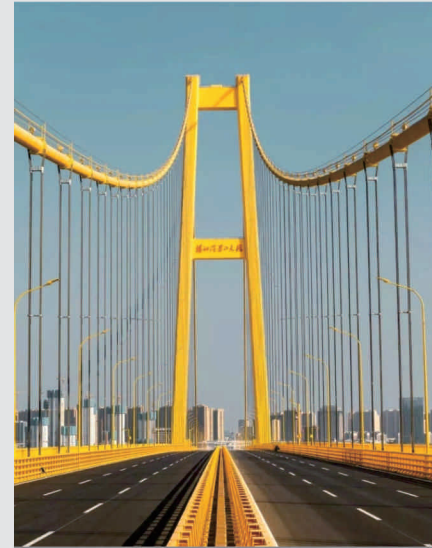
The company now has the manufacturing capacity to undertake 5 main span dry meters or more bridge cable saddle clamp at the same time, has built a professional saddle production line and cable clamp production line, equipped with more than 1800 sets of various processing equipment, 152 sets of main weight equipment for saddle clamp processing, exclusive has a large annealing furnace, saddle welding robot, fully enclosed coating workshop and AP laser tracker and other key equipment, processing and manufacturing capacity ranks first in the industry. The company has participated in the construction of a series of major projects such as Xiamen Haicang Bridge, Wuhan Yangluo Yangtze River Bridge, Guangzhou Pearl River Huangpu Bridge, Nanjing Yangtze River Fourth Bridge, Hunan Aizhai Bridge, Maanshan Yangtze River Bridge, Nansha Bridge (Humen Second Bridge), Yangsigang Yangtze River Bridge, Wufengshan Yangtze River Bridge, Lingdingyang Bridge of Shenzhen-Zhongshan Passage, Nanjing Xianxin Road River Passage, Longtan River Crossing Passage, etc., and has won unanimous praise from users with exquisite craftsmanship, excellent quality and good service!



索鞍生产线  
Cable saddle production line



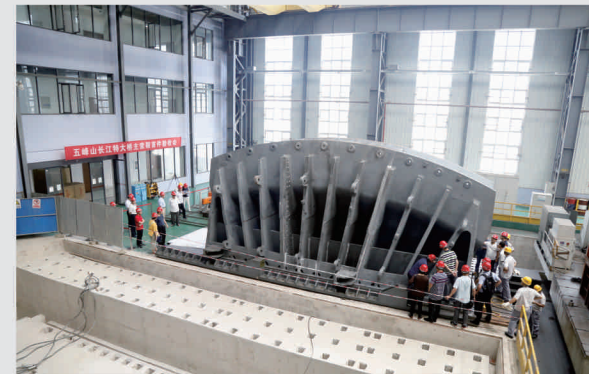
南沙大桥（虎门二桥）索鞍索夹  
Cable saddle and clamp of Nansha Bridge (Humen Second Bridge)



杨泗港长江大桥——主跨1700米  
Yangsigang Yangtze River Bridge with a mainspan of 1700 meters



五峰山长江大桥（公铁两用悬索桥）主跨1092米  
Wufengshan Yangtze River Bridge (highway railway Suspension bridge) with a main span of 1092m



五峰山长江大桥主索鞍装配  
Assembly of main cable saddle of Wufengshan Yangtze River Bridge



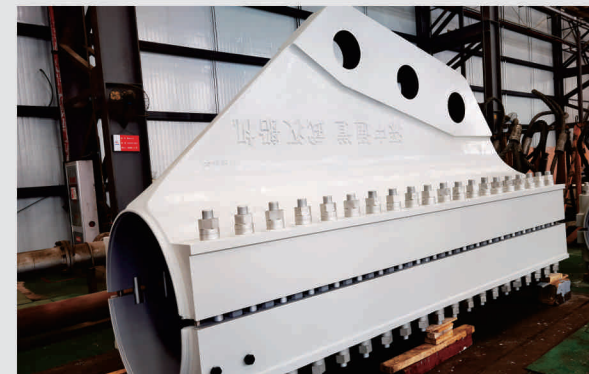
五峰山长江大桥散索鞍摆动试验  
Loose saddle swing test of Wufengshan Yangtze River Bridge



深中通道伶仃洋大桥——主跨1666米  
Shenzhen-Zhongshan Bridge with main span of 1666m



深中通道伶仃洋大桥主索鞍  
Main cable saddle of Shenzhen-Zhongshan Bridge



深中通道伶仃洋大桥索夹  
Cable clamp of Shenzhen-Zhongshan Bridge



燕矶长江大桥  
Yanji Yangtze River Bridge



燕矶长江大桥并列式主索鞍  
Parallel Main Cable Saddle of Yanji Yangtze River Bridge



燕矶大桥全焊接索夹  
All welded cable clamps for Yanji Bridge



# 燃气轮机配套

## Gas Turbine

中小型燃气轮机作为动力输出装备、发电装备大量应用于舰船动力、天然气管道输送、海洋平台电站、中小城市调峰发电等领域，具有广阔的市场前景。作为新一代动力装置，燃气轮机集新技术、新材料、新工艺于一身，制造难度大，燃气轮机被誉为现代工业“皇冠上的明珠”是装备制造领域最高端产品。

As a new generation of power take-off machine, gas turbine has been widely applied in the field of marine, natural gas transportation, ocean/offshore platform power plant and city power plant, and it has an expansive potential demand in the future. Gas turbine manufacturing requires new technology, new material, new manufacturing ethnics, which is seemed as “the brilliant pearl on the laurel” of equipment manufacturing.

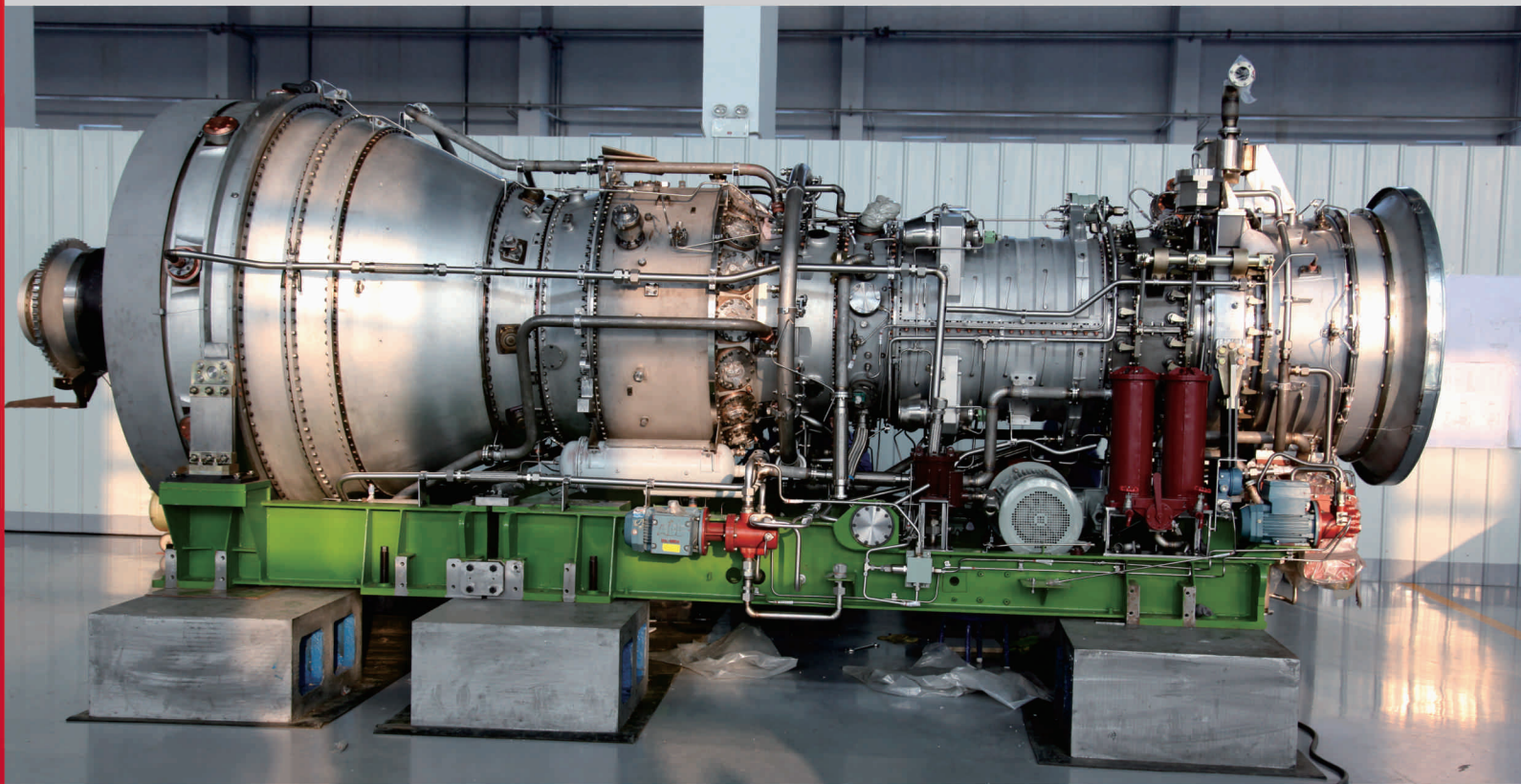
**WMMP**  
WUHAN MARINE  
MACHINERY PLANT CO.,LTD.

## 坚定做中小型燃气轮机核心部件智能制造中心

Firmly be core components intelligent manufacturing center of small and medium size gas turbine.

公司以“中国制造2025”为指引，按照中国船舶集团公司四大领域、十大军民融合产业方向战略布局，将燃气轮机高端制造作为公司六大核心产业板块之一，坚持多渠道、多方位加强与燃气轮机生产研制单位的合作，深入推进新一代信息技术与制造业深度融合。以中小型燃气轮机机匣为主要对象，公司投资8.7亿元新建了面向中小型燃气轮机产业配套的机匣类零件智能制造车间，拥有年产25台套的中小型燃气轮机机匣类零件生产能力。

According to the “Made in China 2025” plan, the company regards the manufacturing of gas turbine as one of six core product fields, orienting itself to CSSC’s business strategy of 4 fields and 10 army-civilian industries. To integrate informatization and industrialization, the company insists on cooperating in many respects with other enterprise that major in gas turbine design and manufacturing. The company has invested 870 million yuan to build an intelligent manufacturing workshop for small and medium-sized gas turbine casings, with an annual production capacity of 25 sets of small and medium-sized gas turbine casings as the main target.

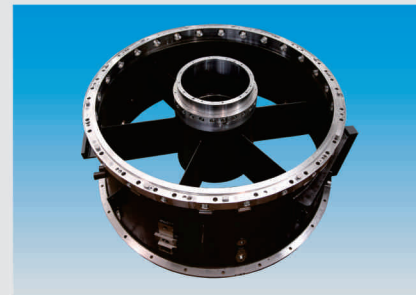


**WMMP**  
WUHAN MARINE  
MACHINERY PLANT CO.,LTD.

燃气轮机机匣类零件具有薄壁、异型、精度要求高的特点，其使用材料主要为耐热不锈钢和高温合金，材料的切削性能差，加工困难，制造工艺复杂，制造难度大。通过多年的攻关，公司已全面掌握中小型燃气轮机机匣零件的核心关键制造技术，成功完成了25MW、33MW和40MW等多型燃气轮机机匣制造。

Gas turbine casing has characteristics with thin wall, special profile and high precision, mostly made of heat-resistant stainless steel and high-temperature alloy which is difficult to cut, requiring complicated manufacturing technics to make it through.

Through years of research and development, the company has fully mastered the core key manufacturing technology of small and medium-sized gas turbine casing parts, and successfully completed the manufacturing of various types of gas turbine casings, including 25MW, 33MW, and 40MW.



前机匣  
Front Receiver



低压涡轮支撑环加工组装图  
Support ring of Low Pressure Turbine



压气机部套承力机匣  
Load-carrying Receiver



压气机机匣部套  
Compressor Receiver Part



承力机匣  
Load-carrying Receiver



过渡段机匣  
Transitional Receiver



低压涡轮轴  
Low-pressure turbine shaft

你给我机会，我给你回报  
OFFER ME AN OPPORTUNITY! RETURN YOU GRATIFICATION! **WMMP**



# 成套设备

## Complete Equipment

公司以技术引领和市场开发相结合，由点到面，加快形成以升船机、启闭机为重点的多品种、系列化成套设备产品系列。

公司先后参与三峡工程、向家坝水电站、武汉地铁等一批国家、地方重点工程的建设，得到了业主的高度肯定，为国民经济建设做出了突出贡献。

The company combines technology leadership and market development, from point to surface, to form a series of multi variety and serialized complete equipment products with a focus on ship elevators and hoists.

WMMP has been participated successively in construction of the local & national projects such as Three-gorge engineering, Xiangjiaba Hydropower station and Wuhan Metro, which had been positively acknowledge by owners and regarded as an excellent contribution to the national economic construction.



露天矿大倾角轨道提升运输系统  
Large Inclination Railway Hoisting and Transportation System for Open Pit Mines

## 露天矿大倾角轨道提升运输系统

### Large Inclination Railway Hoisting and Transportation System for Open Pit Mines

大倾角轨道提升运输系统是为露天矿开采定制开发的专用装备。该系统不仅能在矿坑底部与顶部之间高效运输矿用卡车，将满载煤矿的卡车运往矿坑顶部，将空载卡车运回矿坑底部，同时也能随作业区域变化移动装备位置，实现煤矿开采的连续高效作业。相较于传统开采方式，该装备能显著减少矿用卡车的运输距离和爬坡损耗，同时也能大幅降低露天矿开采过程中的能耗。

典型案例：中国神华能源股份有限公司哈尔乌素露天煤矿研制项目。

The Large Inclination Rail Hoisting and Transportation System is a specialized equipment custom developed for open pit mining. The system not only efficiently transports mining trucks between the bottom and the top of the pit, transporting fully loaded trucks to the top of the pit and empty trucks back to the bottom of the pit, but also moves the equipment's position according to the change of the operation area, realizing continuous and efficient operation of coal mining. Compared with traditional mining methods, this equipment can significantly reduce the transportation distance and climbing loss of mining trucks, and also significantly reduce the energy consumption in the process of open-pit mining.

Typical Case: China Shenhua Energy Company Limited Harsusu Open Pit Coal Mine Development Project



邮轮母港港口客运工艺系统设备  
Cruise Ship Homeport Port Passenger Transportation Process System Equipment

## 邮轮母港港口客运工艺系统设备

### Cruise Ship Homeport Port Passenger Transportation Process System Equipment

港口客运工艺系统设备是为邮轮母港定制开发的专用登乘装备，用于邮轮靠泊港口后快速搭建游客登乘通道，目的是通过登乘通道的升降来适应不同水位的变化，解决大水位落差下游客登乘的难题，为游客提供非常舒适的登乘体验。目前，该产品已应用于重庆寸滩国际邮轮母港，能适应33米的最大水位落差，具备一键操控的智能化水平，可在30分钟内完成水位状态切换。

Port passenger transportation process system equipment is customized for the development of cruise ship homeport special boarding equipment, for cruise ships berthing port after the rapid construction of visitor boarding channel, the purpose is to adapt to the different water level changes through the boarding channel of the lift, to solve the problem of large water level drop under the visitor boarding, to provide tourists with a very comfortable boarding experience. At present, the product has been applied in Chongqing Cuntan International Cruise Terminal, can adapt to the maximum water level difference of 33 meters, with a key to control the level of intelligence, can be completed within 30 minutes of the water level state switch.



垂直升船机 Vertical Ship lifter



三峡升船机 Ship Lifter for the Three Gorges



液压启闭机 Hydraulic Hoist

你给我机会，我让你喜悦  
OFFER ME AN OPPORTUNITY, RETURN YOU GRATIFICATION!

WMMP

## 升船机 Ship Lifter

升船机是利用机械装置升降船舶以克服航道上集中水位落差的通航建筑物，具有可适应水头大和过船效率较高、基本不耗水，以及运转费用较低等特点。由承船厢结构及其提升装置、事故安全装置、平衡重系统、锁定装置等组成。升船机有多种形式，目前国内升船机的两种基本形式是：全平衡齿轮齿条爬升式垂直升船机（三峡升船机）、全平衡钢丝绳卷扬提升式垂直升船机（湖北长阳清江隔河岩升船机、福建水口升船机）。

典型案例：公司承担了三峡升船机船厢驱动系统、事故安全机构、对接锁定机构、平衡重系统等机械设备的制造、设备安装及联合调试。三峡升船机为国内首台齿轮齿条爬升式垂直升船机，其过船规模为3000t级，最大提升高度113m，是目前世界上技术难度和规模最大的升船机。

典型案例：福建水口升船机是国内首座建设的大型湿式全平衡钢丝绳卷扬提升式垂直升船机，能一次通过2×500吨级一顶两驳顶推船队，船舶通过升船机通航时间只需30分钟。

The ship lifter is used to lift ships up and down by means of mechanical device as navigation structure over the river-route regardless of the water level. It features no loss of water, high efficiency for ships to pass and lower cost for transportation. It consists of ship-carrying compartment structure, lifting device, safety device, counter weight system, locking device and so on. There are various ship lifters: among which two types are the most basic presently in China. One is vertical ship lifter(ship lifter for Three Gorges) by means of full-balance between gear and rack during the climbing and the other is vertical ship lifter by means of full-balance among the wire rope during the lifting (ship lifter for Hubei Changyang Qingjiang Geheyan Power Station and ship lifter for Fujian Shuikou Power Station.)

Typical case: the Company had undertaken manufacture, equipment installation and joint commissioning test of the driving system, safety mechanism, locking mechanism by jointing, counterweight system and so on for ship lifter in Three Gorges. This ship lifter is the first vertically-climbing ship lifter in China by means of gear and rack, where ships under 3000t can pass. The maximum lifting height is up to 113m, and it is the biggest as well as the most difficult to be made technically in the world.

Typical case: the ship lifter for Fujian Shuikou is the first vertical ship lifter by means of full-balance wire rope hoisting in China. It can make a fleet (2×500-ton pushers or barges) to pass at one time; Only 30 minutes of duration for navigation are required for the ship to pass through.

## 启闭机 Hoist

启闭机由于其传动效率高、运行平稳、启闭容量大、结构紧凑及用钢量少等优点在水利水电工程中得到日益广泛的应用。

典型代表产品：公司在三峡工程二期、三期项目中多次承制液压启闭机，主要有三峡二期导流底孔3500/1000KN弧门启闭机、排漂孔2×2000KN弧门启闭机、三峡三期冲砂闸门3200/300KN启闭机、右岸排漂3000KN弧门启闭机、快速门1600/3500KN启闭机、泄洪深孔4000/1000KN启闭机、右岸进口快速门4000/8000KN启闭机等。

The hydraulic hoist has been more and more widely applied in water conservancy and hydropower because of advantages like high transmission efficiency, smooth operation, high hoisting capacity compact structure and less steel assumption.

Our company took charge of manufacturing the hydraulic hoist more than once in Phase II and III of the Three Gorges Project, which mainly includes 3500/1000kN radial gate hoist for bottom outlet diversion in Phase II, 2\*2000kN radial gate hoist for floatage drains, 3200/300kN flush gate hoist in Phase III, 3000kN radical gate hoist for floatage on the right bank, 1600/3500kN fast-speed-gate hoist, 4000/1000kN hoist for flood discharge deep hole, 4000/8000kN hoist for fast-speed at the inlet of right bank and so on.



# 加工、检测技术

Process &  
Detect Capability

WMMP  
WUHAN MARINE  
MACHINERY PLANT CO.,LTD.

公司加工手段齐全，装备力量雄厚，具备长轴、深孔、平面、空间曲面的系统加工能力。公司配置有各类检测仪器设备和特种工艺设备，具备从零部件尺寸、形状等几何量的测量到材料理化检验分析全套完备的测量测试能力和对各种特殊材料的加工处理能力，拥有先进的加工制造技术和现代化的厂房设施。

Our company has strong technical strength and advanced equipment, which ensures the complete processing means. This makes us capable for processing long axis, deep hole, flat surface and space curve surface. Our company is also equipped with complete types of testing and special process equipment, which is capable of geometrical dimension (size and shape) measurement for parts, as well as the analysis of the mechanical and chemical properties. For special materials, the processing capacity is also acquired. Besides the advanced manufacturing technology, we have modern plant facilities as well in the company.

WMMP  
WUHAN MARINE  
MACHINERY PLANT CO.,LTD.



智能制造中心 Intelligent Manufacturing Center



大型件装配生产线 Assembly Line for Large Pieces



海西海工试验场 Haixi Offshore Test

## PROCESS & DETECT CAPABILITY



1



2



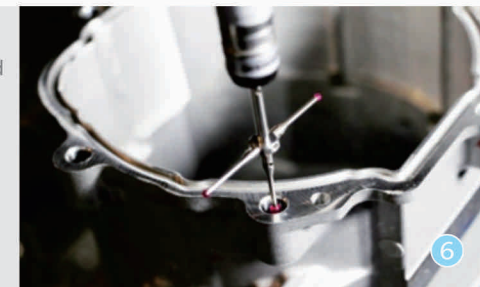
3



4



5



6



6

- 1 数控8轴5联动落地镗铣床 ( HCW-3-200 )  
8-axe with 5 combined motions CNC Floor Boring and Milling Machine (HCW-3-200)
- 2 数控落地镗铣床 ( FB 260 )  
CNC Floor Boring and Milling Machine (FB 260)
- 3 数控卧式车床(CK61250A×25/120)  
CNC horizontal lathe (CK61250A × 25/120)
- 4 16 M数控单柱移动立式铣车床  
16M CNC single-post movable vertical milling lathe
- 5 4.5 米数控龙门镗铣床 ( XK2145×140 )  
4.5 m CNC gantry milling machine (XK2145 × 140)
- 6 龙门式三坐标测量机  
Gantry type three coordinate measuring machine



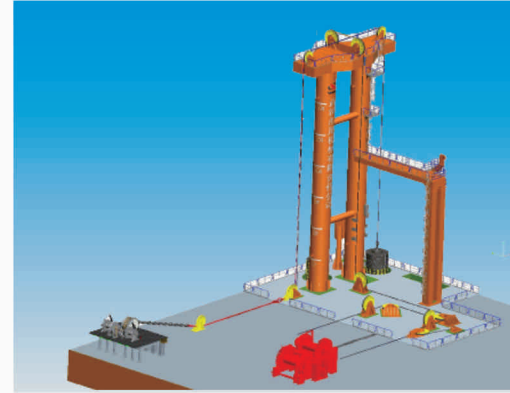
# 船海工程机电设备国家工程研究中心

National Engineering Research Center of Marine Machinery Equipment

WMMP  
WUHAN MARINE  
MACHINERY PLANT CO.,LTD.

围绕船舶与海洋工程机电设备及系统的关键技术研究，强化前瞻性、基础性、应用性技术研究，突破一批重大技术装备和产业关键技术，通过新一代信息通信技术与先进制造技术深度融合，研制一批重大工程装备，坚持技术创新驱动产业发展，打造国际一流的典型船海机电产品品牌，全面提升产业的研发设计、核心制造、运维服务水平，建立服务于集团、行业及国家重大战略任务和重点工程的军民融合创新体系，实现海洋强国目标。

Focusing on the research and development of key technologies for marine machinery equipment and systems, we will strengthen forward-looking, fundamental, and applied technology research, break through a batch of major technical equipment and industry key technologies, deeply integrate new generation information and communication technology and advanced manufacturing technology, develop a batch of major engineering equipment, persist in innovation-driven development, and create an internationally first-class brand of typical marine machinery products, Comprehensively improve the research and development design, core manufacturing, and operation and maintenance service levels of the industry, establish a military civilian integration innovation system that serves major strategic tasks and key projects of the group, industry, and country, and build China into a maritime power.



海上补给系统试验台(6级海况)  
Test-bed of underway replenishment system for transfer of dry and liquid cargoes(sea state-6)

## 综合试验能力 Comprehensive Testing Capability

### 主要参数

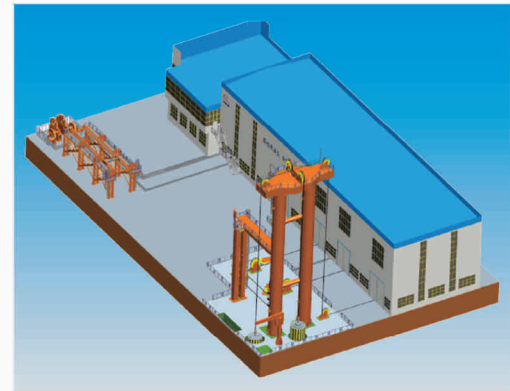
试验区域总面积：总面积21420m<sup>2</sup>（210m\*102m）；  
负载塔架：动载300吨，静载450吨，有效行程32m；  
液压泵站：35MPa×3000L/min、8 MPa×9000L/min；  
配置电站：380V/440V/690V\_3500KW、6300V\_2500KW；  
试验水池：20m×15m×6m（长×宽×深）。

### Main Parameters

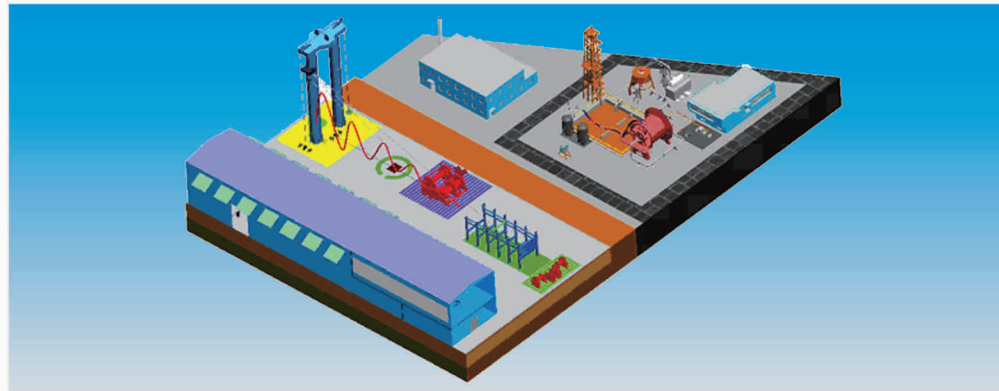
Testing area: 21420m<sup>2</sup> (210m\*102m)  
Load tower: dynamic load 300t; static load 450t;  
Effective travel 32m;  
Hydraulic power pack:35MPa×3000L/min、  
8 MPa×9000L/min;  
Electric power station:380V/440V/690V\_3500KW、  
6300V\_2500KW;  
Testing pool:20m×15m×6m(length×width×depth);  
Simulate Class 6 sea load.



3000kW透平货油泵负载试验台  
3000kW test bench for turbine cargo oil pump load



甲板锚作/定位系统试验系统(塔架动载300吨，有效行程320m)  
Deck anchoring operation/positioning system test system(Tower dynamic load 300t, effective travel 320m)



海洋工程机电设备综合试验能力（三维图）  
Comprehensive Test Capability for Offshore Engineering and Electromechanical Equipment (3D diagram)



6000m<sup>3</sup>/h液货装卸与外输系统试验台  
6000m<sup>3</sup>/h test bench oil liquid cargohandling system



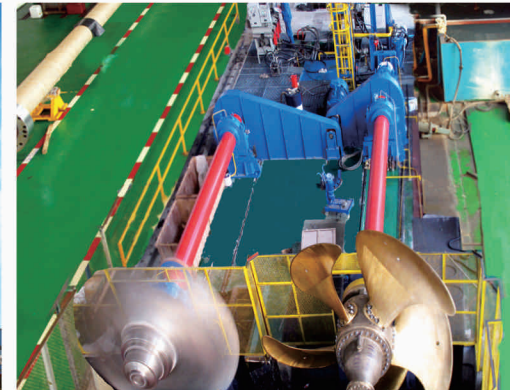
大功率液压核心元件试验台  
High power hydraulic core component test bench



2×300T\*m舵机负载试验台  
2×300T\*m load test bench for the steering gear



15000T\*m起吊设备负载试验台  
15000T\*m load test bench for the lifting appliance



双桨陆上联调试验台  
Joint Test Bench on Land for Double Propeller



WUHAN MARINE  
MACHINERY PLANT CO.,LTD.

# 售后服务 After-sales Service

武汉船机具有完备的产品售后服务系统和快速反应机制，建有全球海外服务网络，开通有免费服务热线，产品售后服务专业人员国内24小时、国外48小时到达指定地点迅速查明问题原因，及时排除故障，恢复产品功能。

WMMP has complete after sale service system and quick response system thanks to global service network and toll free service hotline . After-sale service specialists will be available at domestic designated sites within 24 hours and abroad sites within 48 hours, for rapid problem inspection, timely troubleshooting and functional restoration.

## 售后服务热线 After-sales Service Hotline 400-1111461

电子邮箱Email:  
保修服务(Warranty Service): afterservice-bx@wmmp.com.cn  
调试服务(Commissioning Service): afterservice-ts@wmmp.com.cn  
备件服务(Parts Service): afterservice-xj@wmmp.com.cn

以顾客需求为动力, 以顾客增值为目标, 全寿命保障, 全方位服务。  
Driven by customer needs, aiming at customer value-added, full life guarantee with all-round service.

## 主要子公司 Main Subsidiaries

青岛海西重机有限责任公司  
Qingdao Hisea Heavy-duty Machinery Co.,LTD  
主营业务 :港口装卸机械、船舶起重设备和功能性海工平台研发制造, 专业提供港口设备及物流系统的智能化整体解决方案;  
地址 : 山东省青岛市黄岛区九龙山路1597号  
电话 : +86 0532-55711312  
Main Business: Port Machinery  
Address: No.1597, Jiulongshan Road, Huangdao District, Qingdao, 266530, Shandong Province, P.R.China  
Tel: +86 0532-55711312

武汉铁锚焊接材料股份有限公司  
Wuhan Temo Welding Consumables Co., Ltd  
主营业务 : 焊接材料  
地址 : 湖北省武汉市青山区武东街15号  
电话 : +86 027-68867079  
Main Business: Welding Consumables  
Address: No. 15, Wudong Street, Qingshan District, Wuhan, Hubei  
Tel : +86 027-68867079

